

November 18, 2019
Roland DG

How to create paper craft using the LV-180/LV-290's Bridge Cutting Function



LV-180



LV-290

Paper Craft Challenges

- * In general paper craft, scissors and knife are used to cut drawing paper. However, it is difficult to cut cleanly.
- * Also, it is a difficult technique to bend the drawing paper neatly along the perforation line.

With LV-180 / 290, you can easily create cuts and perforations.



LV-180

LV-290

Bridge Cutting Function

When [Bridge Cutting] check box is selected, we can easily create perforated lines.

How to create the following applications !



Data to use: Pyramid_Box.ai

Media:

- Yellow Drawing Paper (Size 390 x 270mm) * 1

- Blue Drawing Paper (Size 390 x 270mm) * 1

- *Paper thickness: approx. 0.15mm

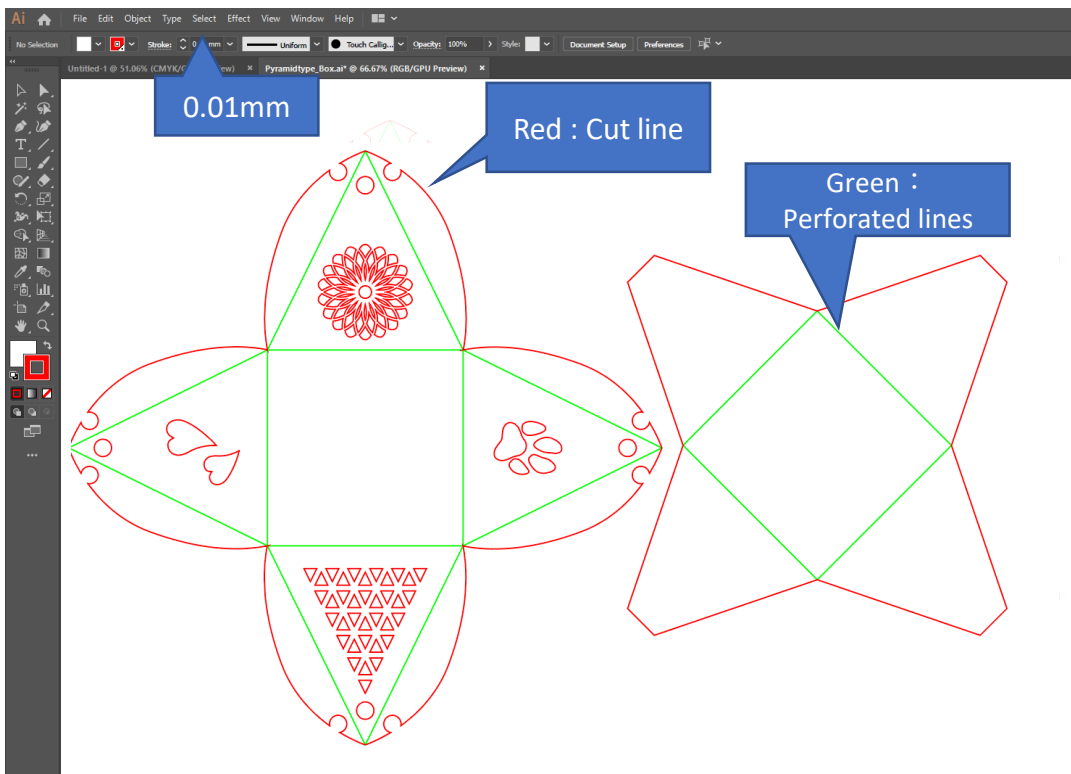
- *Use dark drawing paper. White is unsuitable.

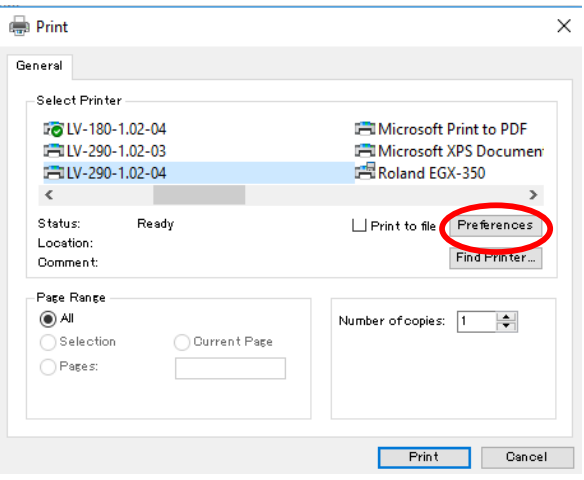
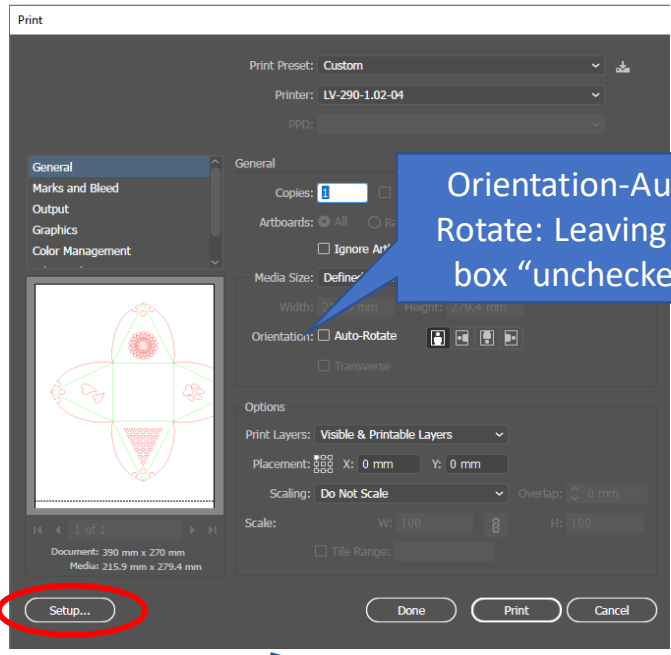
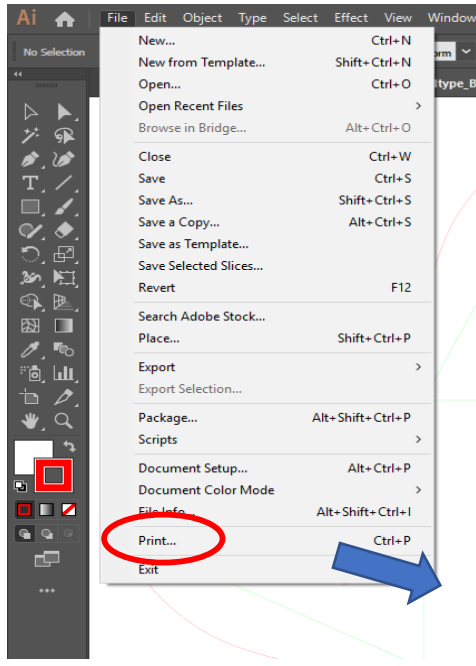


Data creation - Cut line and perforation line are set as follows

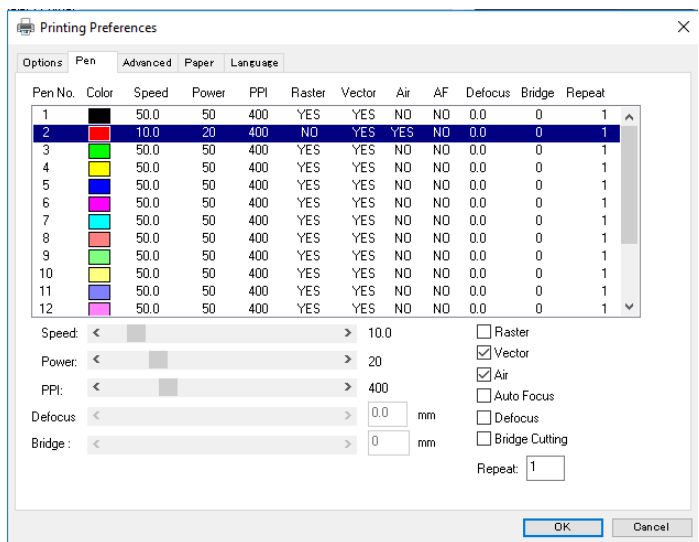
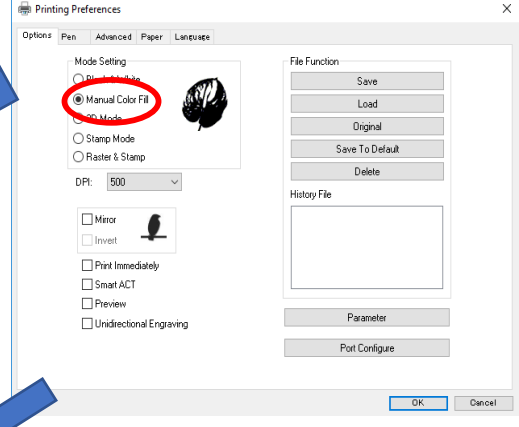
Cut line: LV_Pen pen2(R:255,G:0,B:0), Line width: 0.01mm

Perforated lines : LV_Pen pen3(R:0,G:255,B:0), Line width: 0.01mm



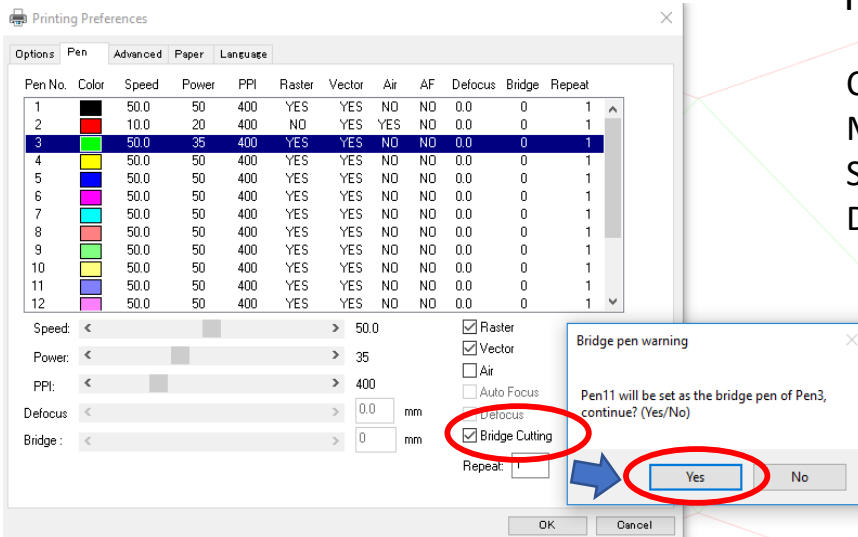


Manual Color Fill selection



Pen2 is the same as the normal cut setting

Conditions this time
Model: LV-290
Speed: 10%, Power: 20%
DPI: 500, PPI: 400, Vector, Air



Pen3 settings

Conditions this time

Model: LV-290

Speed: 50%, Power: 35%

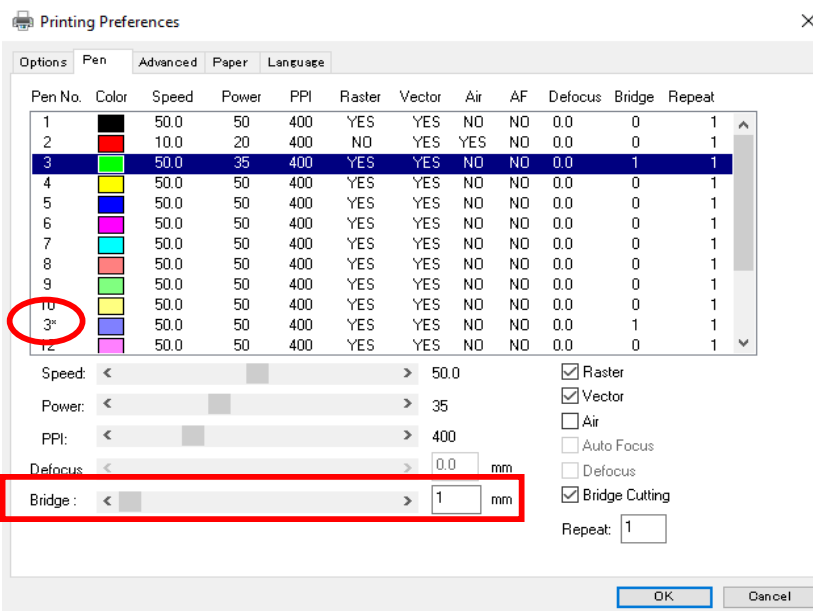
DPI: 500, PPI: 400, Vector, Air

Check the Bridge Cutting check box If you put

Bridge pen warning

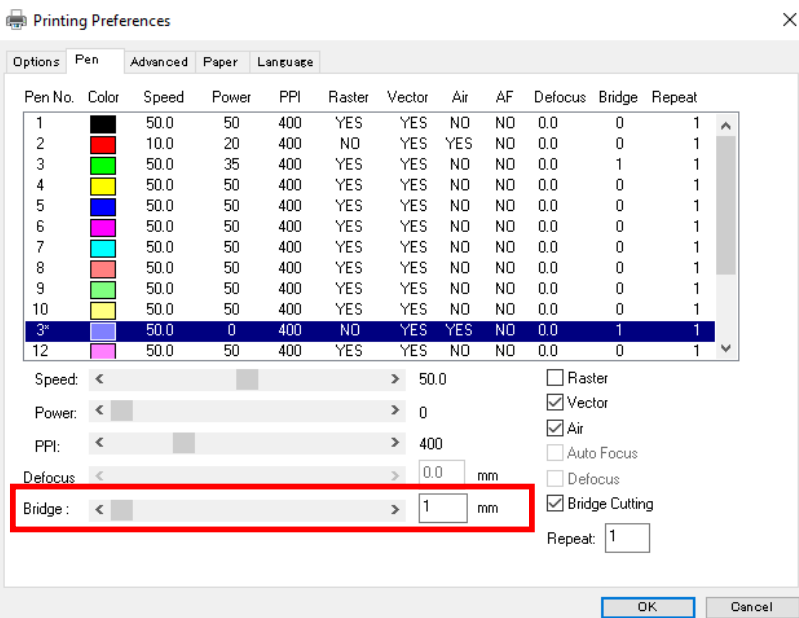
Message will be displayed

Select yes



Pen 3 * is newly added.

Enter the length to cut to Pen3 Bridge (This time, the length is 1mm)



Set the conditions for Pen 3 *

Pen 3 * does not cut perforated lines.

The laser does not output.

Power: 0%

Conditions this time

Model: LV-290

Speed: 50%, Power: 0%

DPI: 500, PPI: 400, Vector, Air

To Pen3 * Bridge

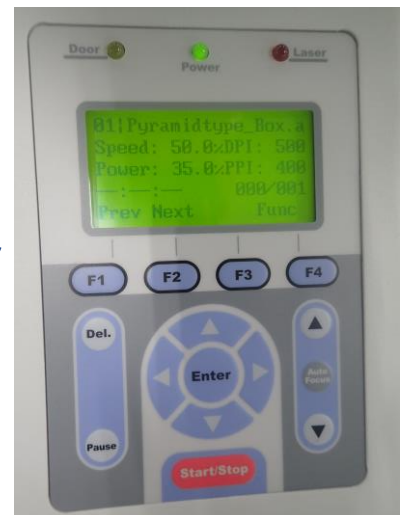
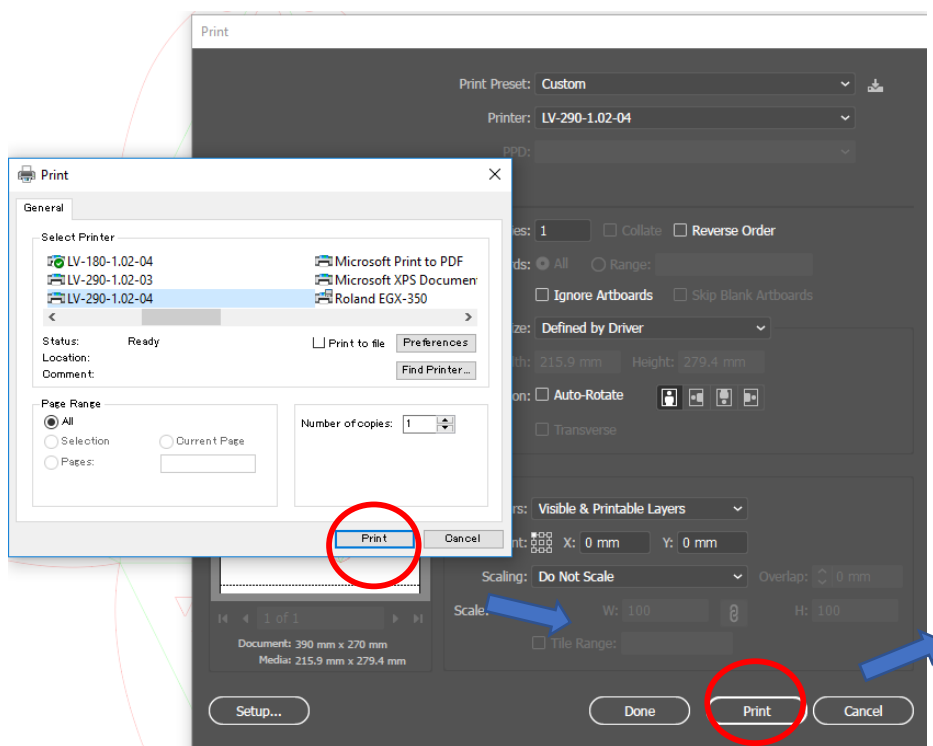
Enter the length not to cut to Pen 3* Bridge.

(This time 1mm)

Perforated lines image



After setting other items such as Advanced, click on “Print” as below.

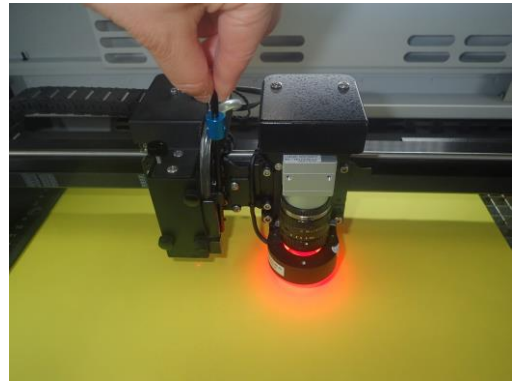


If the media is soft and AutoFocus cannot be used, please remove SmartPIN AutoFocus and set the height using FocusTool.

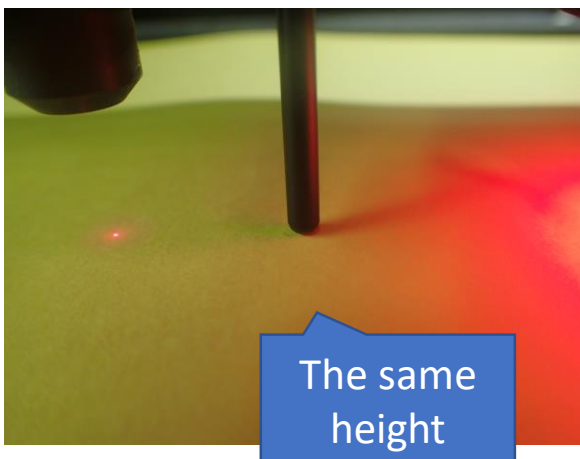
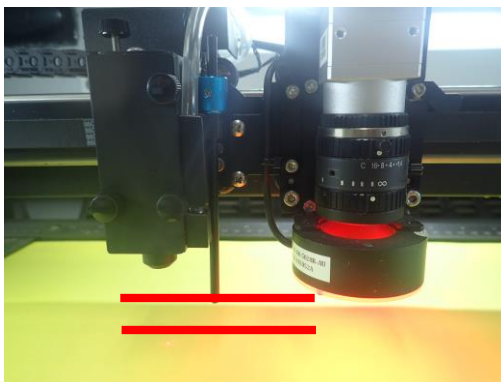
Remove SmartPIN AutoFocus



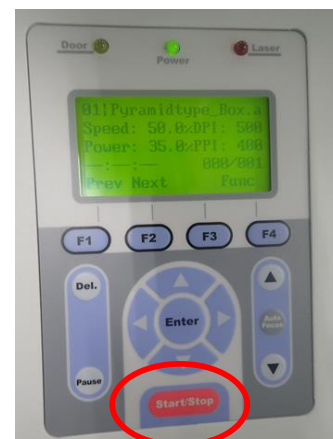
Insert FocusTool



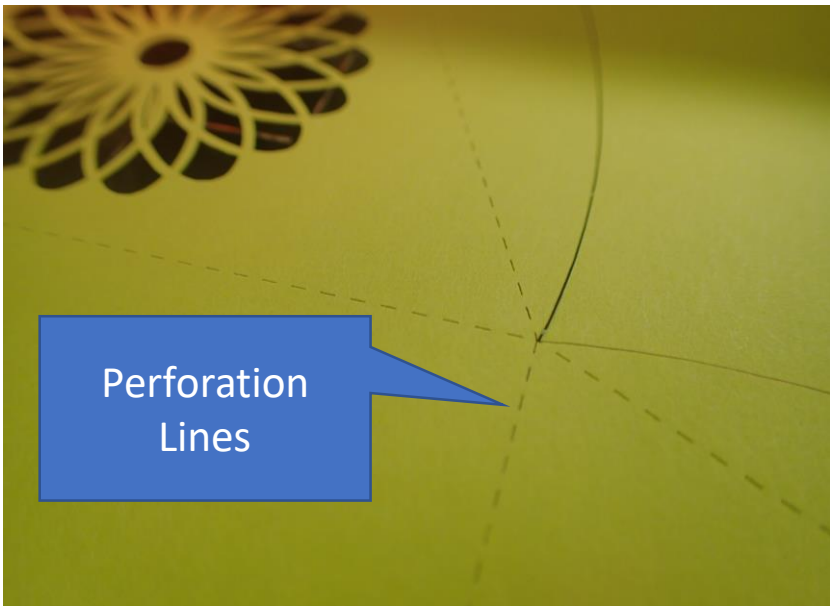
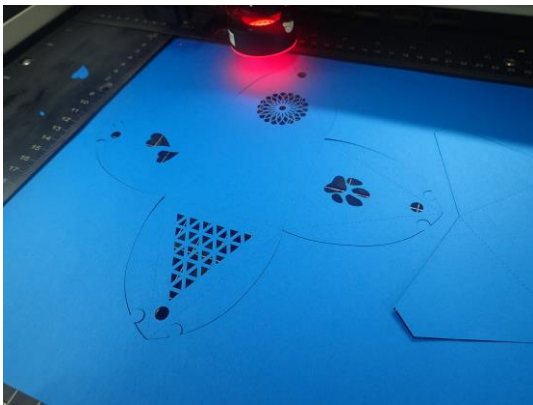
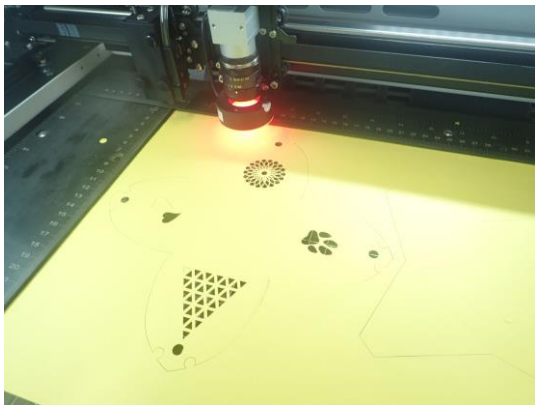
Use the ▲ ▼ keys to adjust between FocusTool and the media. Please make sure the FocusTool PIN and media are the same height.



Remove FocusTool.
Press the Start key to start output



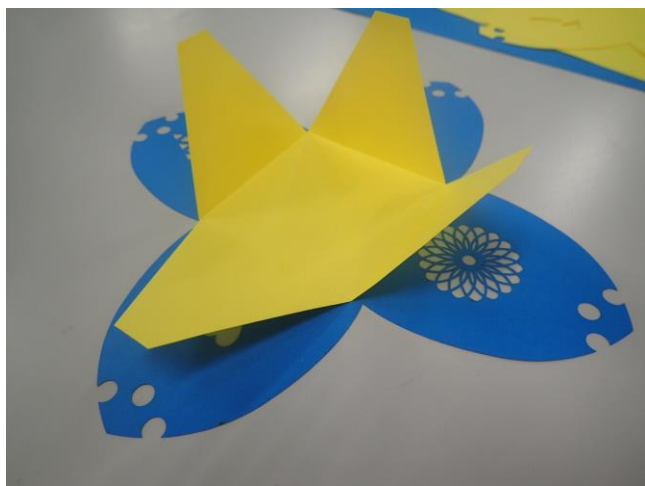
Cut & Perforation Lines



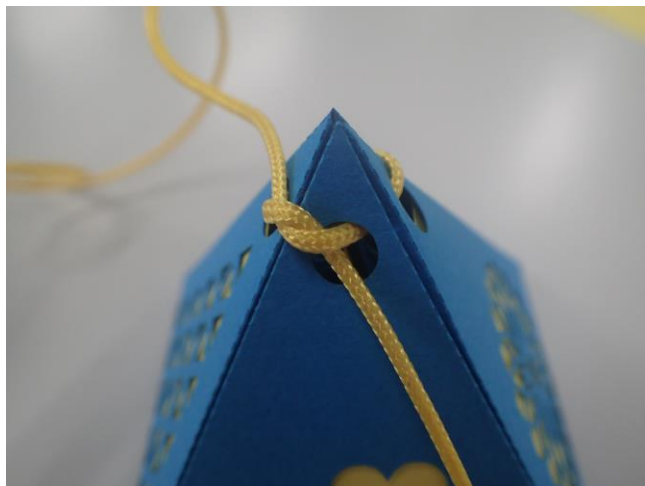
Output



Folding along the perforation lines



Tying the top with a string



Complete !



lace_Box

Usage Data: Lace_Box.ai

Media:

- Blue Drawing Paper (Size 390 x 270mm) * 1
- * Paper thickness: approx. 0.15mm

* Please use dark drawing paper. White is unsuitable.

Output under the same conditions as Pyramid_Box.ai.

